



Kings Point Valve Installation & Replacement Project

Public Utilities Department

Improving Service and Reliability

Hillsborough County Public Utilities Department is responsible for providing high-quality drinking water to residents and businesses within our 272-square mile service area. To achieve that goal, the County operates four drinking water treatment plants, delivering an average of 46.5 million gallons of drinking water each day through 2 booster pump stations and more than 2,340 miles of distribution piping.

Valves located throughout our distribution system control the water flow and pressure. New valves in Kings Point will improve water supply reliability and provide operational flexibility as Hillsborough County will be able to isolate small pipeline segments for repairs or maintenance, without impacting the entire community.



Project Overview

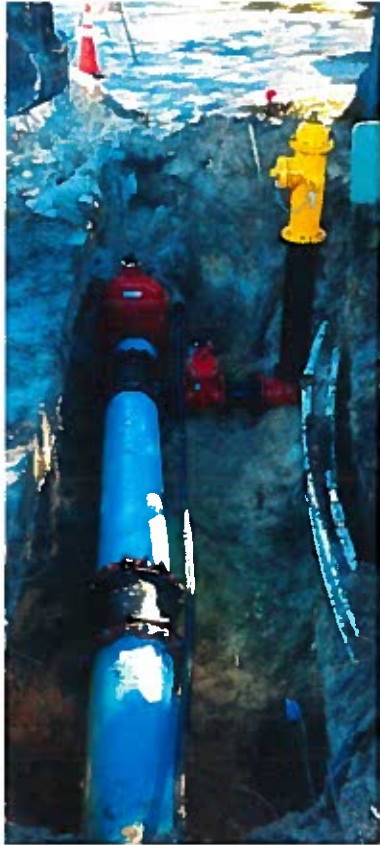
Development began on Kings Point in Sun City Center in the 1970s. At that time, the developer installed the community's drinking water distribution system. Now, many of the valves in that distribution system are at the end of their useful lives and are failing. Additionally, the Kings Point system lacks valves at key locations. Failing valves and too few valves means a large portion of the Kings Point community loses water service if any point in the system needs repair or maintenance.

The Kings Point Valve Installation & Replacement Project will remedy that situation. The project will replace old, failing valves and install several new valves at strategic locations throughout Kings Point. The project will save time, money and water. With new valves in place, crews will be able to efficiently isolate and repair problems with minimal water loss and minimal time wasted.

Timing & Schedule

The Kings Point Valve Installation & Replacement Project will take approximately 18 months to design and build:

Surveying & Utilities Location	Spring/Summer 2016
Begin Valve Replacement & Installation	Summer 2017
Final Restoration & Project Completion	Spring 2018



Construction will take about one day per valve. Crews may excavate by hand or use heavy equipment, depending on the location.

What to Expect During Construction

Kings Point distribution lines are located near the roadway, in the roadway, behind homes and in between homes. Construction will occur in these areas, but because the new valves range in size from 2 to 8 inches, only small areas will be disturbed. It should take about one day to replace each valve, with final restoration to follow. Multiple crews will work simultaneously; in some areas, crews may excavate by hand, while in others, heavy equipment may be needed. Residents should expect some temporary road or lane closures. All detours and closures will be clearly marked and flagmen will help direct traffic, if necessary.

Any grassy areas disturbed by construction will be restored to their pre-construction conditions within days. Paved areas disturbed by construction will be temporarily restored to drivable condition, then new pavement will be placed approximately two or three weeks later.

Water Service Interruptions

During construction, it may be necessary to interrupt water service for short periods of time (less than 6 hours). Following the service outage, residents may be advised to boil water used for drinking or cooking for about three days. To help you plan ahead, residents will be notified in advance of any interruptions and of the need to boil water. You will also be notified once water quality has been confirmed and the system has been cleared for normal use.

Cost

The Kings Point Valve Installation & Replacement Project has been approved by the Hillsborough County Board of County Commissioners in the 2015 Capital Improvement Program. The project cost \$2 million and is being funded by the Public Utilities Department.

Working with the Community

To minimize inconvenience, Hillsborough County will maintain an open dialogue with the community as the project progresses. The County will keep residents involved and informed through website updates, door hangers and community presentations, as needed.

For more information, go to www.HillsboroughCounty.org/projects and click Water & Sewer Projects. You can also call Flint Seth, project manager at (813) 964-2708. To sign up for Notify Me email announcements and notices on the Palm River Drinking Water Project, go to www.HillsboroughCounty.org/list.aspx.



Kings Point Valve Installation & Replacement Project

Public Utilities Department

Questions and Answers

What is the Kings Point Valve Installation & Replacement Project?

The Kings Point Valve Installation & Replacement Project will replace old, failing valves and install several new valves at strategic locations throughout the Kings Point community. The project will save time, money and water. With new valves in place, crews will be able to efficiently isolate and repair problems with minimal water loss and minimal time wasted.

Why is this project needed?

Many valves in the Kings Point drinking water distribution system are at the end of their useful lives and are failing (the system was built in the 1970s). Additionally, the Kings Point system lacks valves at key locations. Failing valves and too few valves means a large portion of the Kings Point community loses water service if any point in the system needs repair or maintenance.

How many valves are being replaced?

Approximately 98 valves are being replaced and 35 additional valves are being installed at strategic locations to ensure reliable service and flexible operations.

How much does the project cost?

The project cost \$2 million and is being funded by the Public Utilities Department. The project has been approved by the Hillsborough County Board of County Commissioners in the 2015 Capital Improvement Program.

Will this project increase my water rates?

No. The funds are already on hand in the County's water enterprise fund.

What is the timing of the project?

The Kings Point Valve Installation & Replacement Project will take approximately eleven months to design, six months to procure and award a construction contract and seven months to complete construction. Work began in early 2016 on the design, and in spring 2016, crews will be in the field surveying and locating underground utilities. Construction is scheduled to begin in summer of 2017 and the project should be completed in spring of 2018.

Where are the valves being installed?

Kings Point distribution lines are located near the roadway, in the roadway, behind homes and in between homes. Construction will occur in these areas, but because the new valves range in size from 2 to 8 inches, only small areas will be disturbed. It should take about one day to replace each valve, with final restoration to follow.

How will this affect me and my home?

You can expect to see and hear construction activity in your neighborhood, and perhaps, hear your home. However, access to your home will be maintained. The biggest inconvenience may be temporary water service interruptions (less than 6 hours). Following the service outage, residents may be advised to boil water used for drinking or cooking for about three days. To help you plan ahead, residents will be notified in advance of any interruptions and of the need to boil water. You will also be notified once water quality has been confirmed and the system has been cleared for normal use.

Why do you have to interrupt water service?

Because the Kings Point community lacks adequate valves to isolate areas where work is required, we will have to shut off water service to replace and install valves. Whenever the system is disrupted, it may be necessary to boil water used for drinking or cooking until the system is flushed and tests confirm water quality.

Will there be heavy equipment in the neighborhood?

The construction techniques will vary from location to location, depending on the size of the valve and the depth of the distribution line. Multiple crews will be working simultaneously; in some areas, crews may excavate by hand, while in others, heavy equipment may be needed.

Will construction affect traffic?

Residents should expect some temporary road or lane closures. All detours and closures will be clearly marked and flagmen will help direct traffic, if necessary.

How will you restore roads?

Paved areas disturbed by construction will be temporarily restored to drivable condition, then new pavement will be placed approximately two or three weeks later.

How will you restore landscaped areas?

Any grassy areas disturbed by construction will be restored to their pre-construction conditions within days.

How will you keep the community informed?

Hillsborough County will maintain an open dialogue with the community as the project progresses. The County will keep residents involved and informed through website updates, door hangers and community presentations, as needed.

For more information on the project, go to www.HillsboroughCounty.org/projects and click on Water & Sewer Projects. You can also call Flint Seth, project manager at (813) 964-2708. To sign up for Notify Me email announcements and notices on the Kings Point project, go to www.HillsboroughCounty.org/list.aspx.